

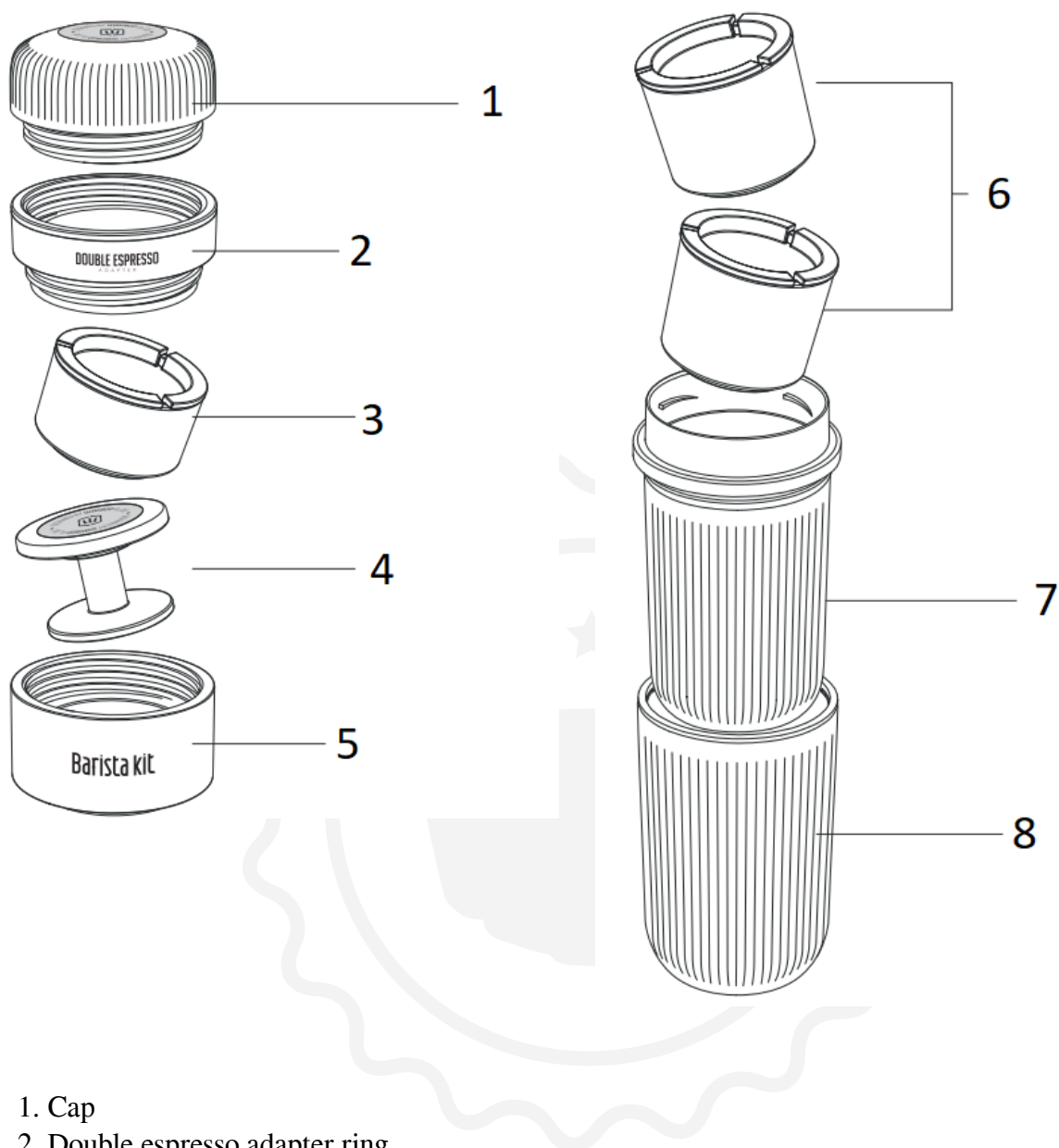


WACACO

Wacaco Barista Kit

Instructions for use

Description



1. Cap
2. Double espresso adapter ring
3. 8g filter basket (with lid)
4. Coffee tamper
5. Water tank mount
6. 16g filter basket (with lid)
7. Water tank
8. Espresso cup

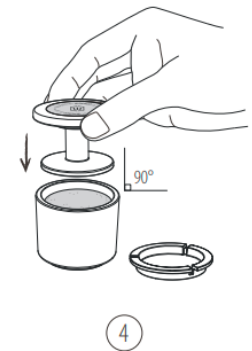
Instructions

1. Unscrew the cap from the barista kit, and take out the double espresso adapter ring.
2. Unscrew the portafilter from the Nanopresso.



3. Screw the portafilter into the double espresso adapter ring.

4. Add the coffee grounds (16g) into the filter basket. Use the tamper to level and compress the espresso ground.



5. Put the filter basket filled with ground on the top of the main body.

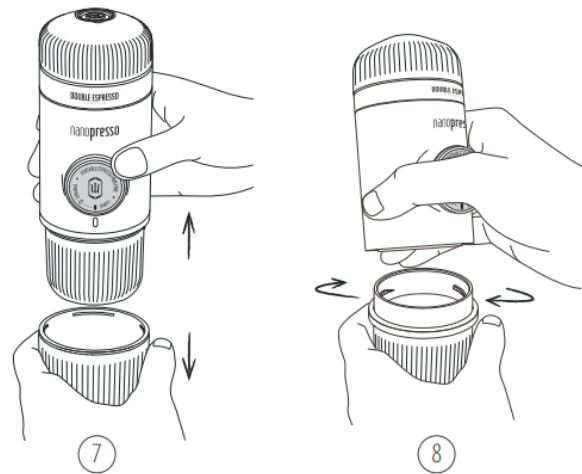
6. Screw back tightly the portafilter with adapter ring into the main body.



For step 7 to 10, you can use the water tank of your choice (small or large)

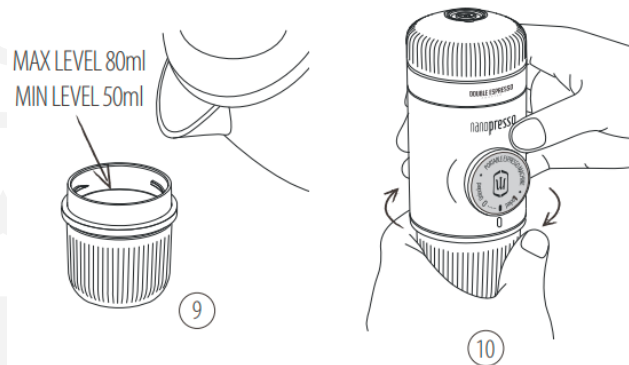
7. Unclip the cup if needed. Do not unclip the cup if the water tank is filled with hot water!

8. Unscrew the water tank.



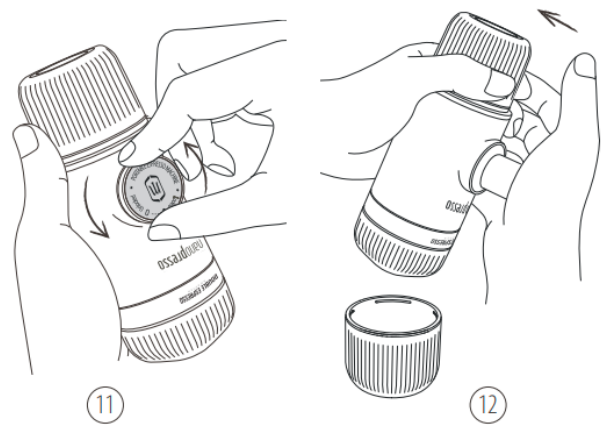
9. Add the boiling water into the water tank. Place water tank on level and stable surface to fill it!

10. Screw tightly the main body onto the water tank. Avoid burning yourself!



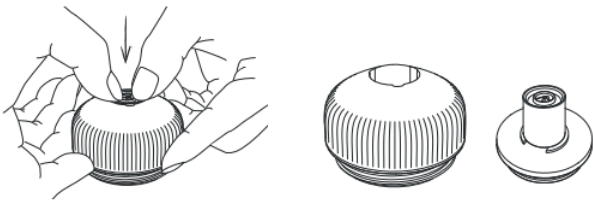
11. Unlock the piston from its travel position.

12. Hold the Nanopresso with two hands, as showed. Start pumping above a cup. Pump slowly until all coffee comes out.

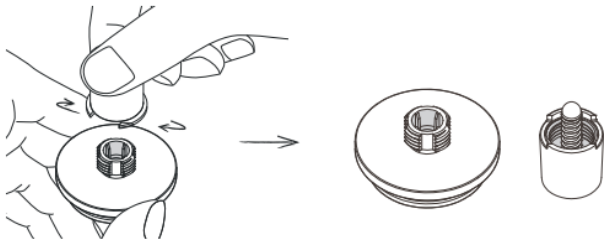


For Best Results

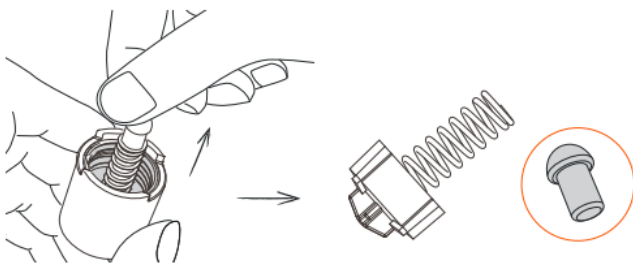
Use the Nanopresso in non-pressurized mode as instructed below:



1. Unclip the nozzle part.



2. Unscrew the nozzle


















3. Remove the small black silicon part located inside the long spring. Reassemble the nozzle. Take care to not lose that small black part.

In non-pressurized mode you may want to use little finer coffee grind.

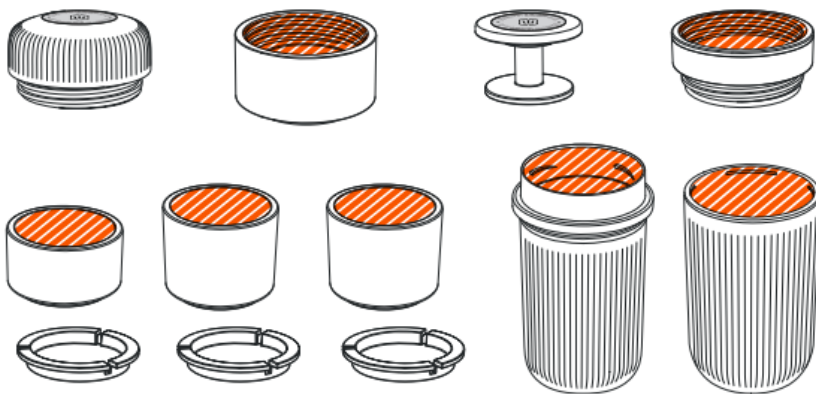
Nanopresso + Barista kit

What to drink?

coffee menu	water tank (Maximum)	filter basket	in cup (Maximum)
Single Espresso	 50ml	 8gr.	 30ml
Double Espresso	 80ml	 16gr.	 60ml
Lungo	 150ml	 16gr.	 120ml
2 Single Espresso	 100ml	 X2 8gr.	 X2 30ml
2 Double Espresso	 150ml	 X2 16gr.	 X2 55ml

Cleaning

It's important to respect and clean regularly your machine and its accessories. A good maintenance will allow you to use your Nanopresso for many years. After each use clean the parts under running water. Let them dry separately.



WARNING!

Do not put any Nanopresso Barista kit parts into dishwasher.

Intended Use

The Barista kit accessory is only compatible with the Nanopresso. The Barista kit is intended to a personal use. It is not suitable for commercial, professional, collective or industrial use.

Use of the Barista kit in any manner other than as directed herein could cause harm to persons and void the warranty. Wacaco Company Limited will not be responsible for injury or damage resulting from improper use.

Warranty and how to use the product

Products are covered by the standard statutory warranty period. This warranty is non-transferable and financial compensation in cash is not possible. The warranty does not apply to products that have been used in a manner other than that specified in these instructions for use.

The warranty also does not cover:

- Damage resulting from improper use, neglect of care, or any other use for purposes not listed in this manual.
- Damage to appearance, damage caused by corrosion or gradual wear and tear.

Any intervention or repair by unauthorized persons results in the voiding of the product warranty.

Seller and importer: NajTrade s.r.o., Húskova 31, 04023 Košice, IČO: 50590502.

