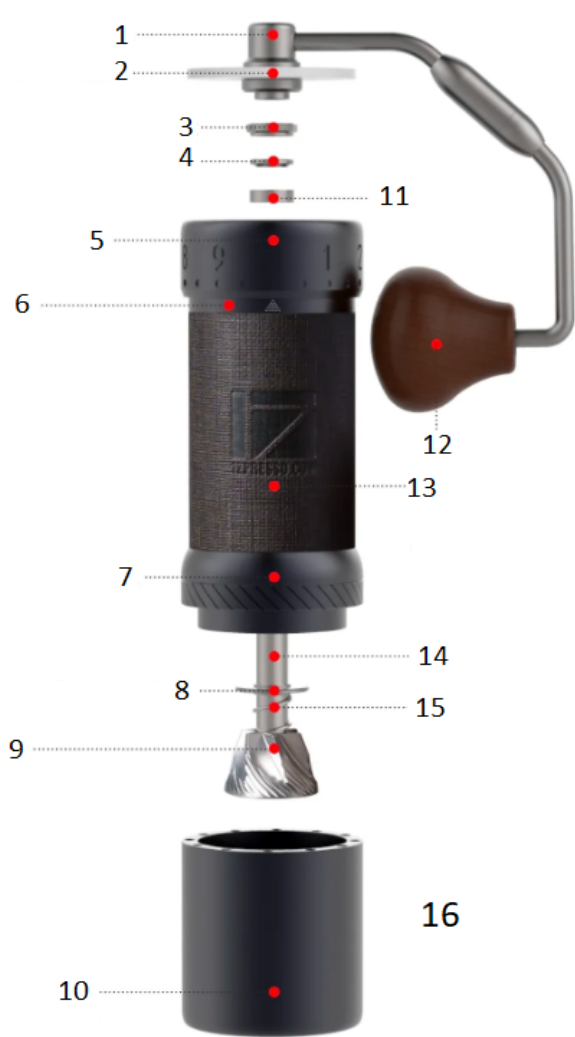




1Zpresso J-Ultra Manual Coffee Grinder

Instructions for use

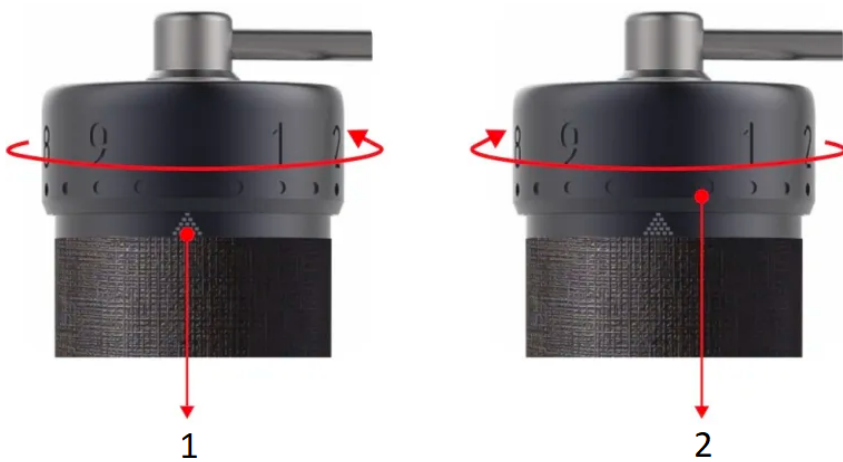
Expanded View



1. Crank Handle
2. Bean Cover
3. Knurled Thumb Nut
4. Upper Bearing Cap
5. Adjustment Dial Ring
6. Body
7. Burr Ring Unit
8. Lower Bearing Cap
9. Burr
10. Magnetic Catch Cup
11. Upper Bearing
12. Crank Knob
13. Grip
14. Product color may slightly vary due to
15. different versions.
16. Central Shaft
17. Spring
18. Grounds Capacity: 40g

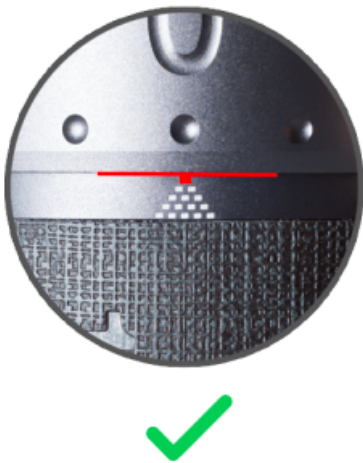
(Depending on the bean type)

User Instructions



1. Scale Mark
2. Adjustment Dial Ring

Adjusting the Grind Setting



1. The grinder is ready to use out of the box. Turn the adjustment dial ring counter-clockwise all the way to the starting point where the resistance starts and the crank handle can't spin freely. The #0 will be aligned with the scale mark and the bottom edge of the adjustment dial ring will touch the first tier of the scale mark.
2. The *pyramid-shaped* scale mark consists of multiple squares that indicate how many rotations you are at, and it gets smaller while you set coarser settings.
3. There are five rotations in total. 100 clicks in a single rotation and each click moves the burr by 0.008mm/8 microns.
4. Refer to the Grind Setting Reference chart below and turn the adjustment dial ring clockwise to dial in.
5. Attach the rubber band to the grinder for a better grip.
6. Put coffee beans in the hopper and turn the handle clockwise to start grinding.
7. Follow the guide to calibrate the grinder after disassembling and reassembling the grinder.

Disassembly

Warning: Do not loosen the burr ring unit before step 3.



Turn the adjustment dial ring clockwise by around two rotations and remove the knurled thumb nut counter-clockwise while pressing the burr.



Remove the upper bearing cap and upper bearing.



Remove the burr and central shaft, spring and lower bearing cap.



Turn the burr ring unit forward (reverse threads).

Disassembling the adjustment dial ring is not suggested.

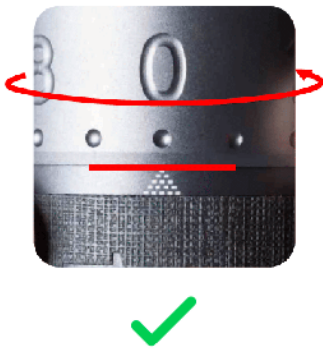
Do not clean the grinder with water.

Cleaning with a brush and blower is recommended.

Assembly & Calibration



Turn the burr ring unit backward (reverse threads) to the tightest position.



Align the #0 with the scale mark and the bottom edge of the adjustment dial ring touches the first tier of the scale mark.



Put the components back in the right sequence: lower bearing cap (the raised edge side facing upward), spring, shaft and burr.



Put the upper bearing back from the top. While pressing the burr from the bottom, put the upper bearing cap back. The side with concave dots faces upward, and the U-shaped hole fits the shaft properly.

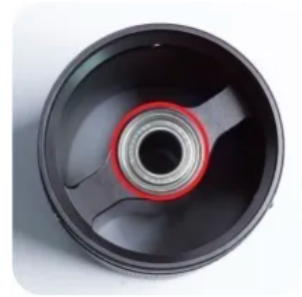


Tighten the knurled thumb nut to calibrate the grinder while pressing the burr from the bottom.

Note: There are four and a half rotations in total counted from the starting point. The starting point might be different within ± 10 clicks due to the strength you tighten the nut and dial.

Warning

Do not attempt to disassemble or remove the following components any further:

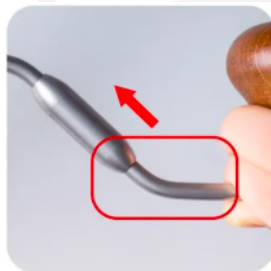


1. The central shaft and the burr
2. The burr ring unit
3. The bearings

Foldable Handle

Warning: The handle will not be covered by warranty if any part is taken apart.

How to fold?



Hold the crank part near the wooden knob and push it in.



Turn the handle clockwise all the way to fold.

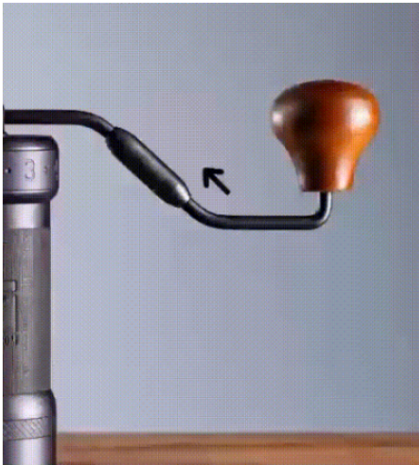
How to unfold?



Hold the crank part near the wooden knob and push it in.



Turn the handle counter-clockwise all the way to unfold.



Precautions

- Do not clean and wash the grinder with water.
- Do not wipe your grinder with solvents other than water and alcohol.
- Keep it in a dry environment in order to extend its lifetime.
- Follow the instructions of re-assembly, ensure to place the components into the correct positions.
- Keep the grinder away from children for safety concerns.

Warranty and how to use the product

Products are covered by the standard statutory warranty period. This warranty is non-transferable and financial compensation in cash is not possible. The warranty does not apply to products that have been used in a manner other than that specified in these instructions for use.

The warranty also does not cover:

- Damage resulting from improper use, neglect of care, or any other use for purposes not listed in this manual.
- Damage to appearance, damage caused by corrosion or gradual wear and tear.

Any intervention or repair by unauthorized persons results in the voiding of the product warranty.

Seller and importer: NajTrade s.r.o., Húskova 31, 04023 Košice, IČO: 50590502.

