

Flair Café Kettle

Instructions for use

Getting Started with your Café Kettle

The Quick Intro

Thank you for purchasing the Café Kettle from Flair Espresso. We strive to make espresso brewing easy, affordable and fun. A kettle is a key component to any home espresso bar, and we're so glad you've chosen to brew with Flair.

This model of the Flair Café Kettle is for 220v systems only, and will only display temperature units in Celsius. The software on the Café Kettle is meant to be easy and intuitive. There are three functions to choose from, with more instructions on the following pages:

- Quick Boil: Heats your brew water to a selected temperature, then turns off.
- WARM: Heats your brew water to a selected temperature, then maintains that temperature for 30 minutes before turning off.
- Quick Boil & WARM Combo: Heats your brew water to 100°C then returns it to a selected WARM temperature for 30 minutes before turning off.

Fits Like A Glove

Connecting Your Kettle to the Power Base



1 - Kettle Handle Position

Your Café Kettle fits into the base with the handle oriented over the Display and controls. It will not fit onto the Power Base in any other position.

Once on the base, the kettle will swivel roughly 15° in either direction, left or right, to ensure good visibility of the Display and controls. It doesn't matter if you're left or right handed - we've got you covered!

What's In a Kettle

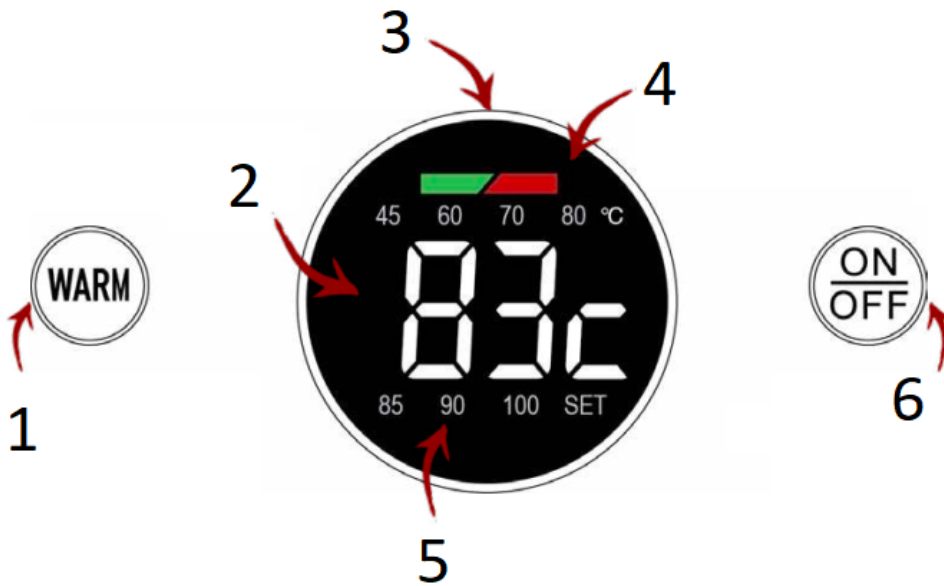
Kettle Parts You Need to Know



1. Lid
2. Handle
3. Control Knob & Display
4. Fill Level Markings
5. Power Base
6. Spout
7. Power Cord

Brew Your Best Life

Basic Kettle Functionality



1. **Warm Button** - Starts WARM Function, Tap to Cycle Pre-Set Temps
2. **Temperature Display** - Current & Target Temps
3. **Control Knob** - Right to Increase, Left to Decrease
4. **Action Indicator Light** - Flashes Red for Heating, Flashes Green for Warming
5. **Preset Temp Settings** - Displays Preset Temps, Not Always Visible
6. **ON/OFF Button** - Starts Quick Boil Function, Cancels Any Mode, Wakes from Sleep

Using The Quick Boil Mode

Some Like It Fast and Hot

The Quick Boil mode will get you brewing fast. The default setting for the Quick Boil mode is 100°C but a specific temperature can be selected by turning the knob after pressing ON/OFF. Once a new Quick Boil temperature is selected, it will be stored in the kettle's memory until a new temperature is selected, or the defaults are reset by unplugging the kettle. To operate the Quick Boil mode, follow the steps below.



Tap the ON/OFF Button to start the Quick Boil Mode.
(If the display screen is asleep, first tap ON/OFF to wake)



100 will display if no other Quick Boil temperature has been selected. If desired, select other temperature by turning knob. 100°C will disappear.



Once temperature is selected, kettle will beep to start heating.
Action Indicator Light will flash red while heating.
Temperature Display will flash between current and target.



Once target temperature is reached, kettle will beep 2 times.
Heating will shut off, with no warming taking place.
After 30 seconds, the display will go into sleep mode.

Note: If you select a temperature that is below the current temperature of the water in the kettle, the Quick Boil mode will cancel.

Using The Warm Mode

Others Like It Warm and Cozy



Tap the WARM Button to start the Quick Boil Mode.
Continue to tap the WARM button to cycle through available preset temperatures 45/60/70/80/85/90°C.



If you don't want to use a pre-selected temperature, select a specific temperature by turning the knob. SET will illuminate and your temperature will be seen on the Temperature Display.



Once temperature is selected, kettle will beep to start heating.
Action Indicator Light will flash red while heating.
If using a preset temperature, this will be illuminated and Temperature Display will show current temp only. If using a SET temp, Temperature Display will flash between current and target.



Once target temperature is reached, kettle will beep 2 times.
 Action Indicator Light will flash green while warming.
 Kettle will keep water warmed at selected temp for 30 minutes.

Note: If you select a WARM temperature that is below the current temperature the kettle will slowly reduce temp until reaching the target temp. Then it will warm for 30 minutes before returning to the sleep mode.

Using The Quick Boil & Warm Combo Mode

Best for Purifying Water That Might Be Unsafe



then



Tap the ON/OFF Button then the WARM button. 100 Illuminates.
 (If the display screen is asleep, first tap ON/OFF to wake)



or



Select a WARM temperature by turning the knob or by tapping the WARM button to choose a preset temperature. Selecting a specific temperature with the knob will illuminate SET.



Once temperature is selected, kettle will beep to start heating.
 Action Indicator Light will flash red while heating to 100°C.
 Current Temperature Display will show increasing temperature.
 If SET temp is selected, Display flashes between current and target.



Once boil is reached, kettle will beep 2 times.
 The kettle will allow the water to cool to the selected WARM temperature. It will keep the water warm for 30 minutes.
 Action Indicator Light will flash green while warming.

A Mind Of Its Own

Your Kettle Has a Memory

Your Kettle has its own memory, which means it can store settings and previous selections, such as your quick boil temperature and your warm temperature. When in sleep mode, the kettle will maintain these selections. To reset to the defaults, simply unplug your kettle from the wall, and plug back in. This will restore the defaults, specifically 100°C for the quick boil.

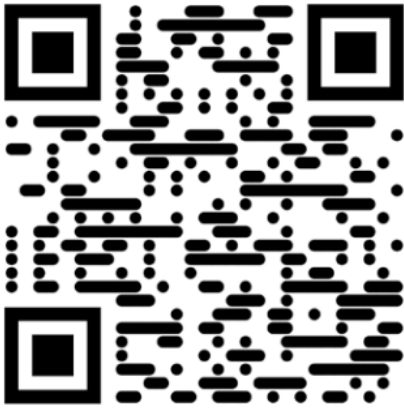
You Can't Be Too Careful

Basic Warnings to Adhere To

- Ensure the water level is between the minimum and maximum as seen on the kettle walls. Do not over or underfill. An overfilled kettle may splash boiled water. An underfilled kettle risks burning the heating element.
- Do not cover the steam vents on the kettle lid.
- Never submerge your kettle in water. Ensure the connection port between the base and the kettle remains dry.
- Always hold the kettle by the handle, never the body, which will be extremely hot after use and may cause burns.
- Do not place excessive force on the lid of the kettle. Doing so could eject boiled water.
- This device is not intended for children, and is not safe for them to use. Please ensure appropriate safety precautions when children are present.
- Be mindful of all cords and plugs to ensure the kettle is in a safe position. Never let cords dangle over the edge of a counter or table.
- Never boil or put any liquid in the kettle other than water.
- Never tip the kettle completely upside down. Water may eject from the steam vents or the lid may unseat.
- Do not open the lid when boiled or heated water is inside.
- Be sure to only place the kettle on an even, solid surface.
- Your kettle may require descaling from time to time. Before cleaning or descaling, ensure the kettle is turned off and cool.
- Do not try to pick up the kettle by the lid.
- When using your kettle, ensure it is not placed beneath a cabinet or near a wall. Constant steam interaction can damage surfaces. A distance of 30cm is recommended.

Flair's World-Class Customer Service Is a Snap Away

Troubleshoot Your Café Kettle



Reach Us Directly: <https://flairespresso.com/contact/>

Warranty and how to use the product

Products are covered by the standard statutory warranty period. This warranty is non-transferable and financial compensation in cash is not possible. The warranty does not apply to products that have been used in a manner other than that specified in these instructions for use.

The warranty also does not cover:

- Damage resulting from improper use, neglect of care, or any other use for purposes not listed in this manual.
- Damage to appearance, damage caused by corrosion or gradual wear and tear.

Any intervention or repair by unauthorized persons results in the voiding of the product warranty.

Seller and importer: NajTrade s.r.o., Húskova 31, 04023 Košice, IČO: 50590502.