

STARESSO

Starezzo

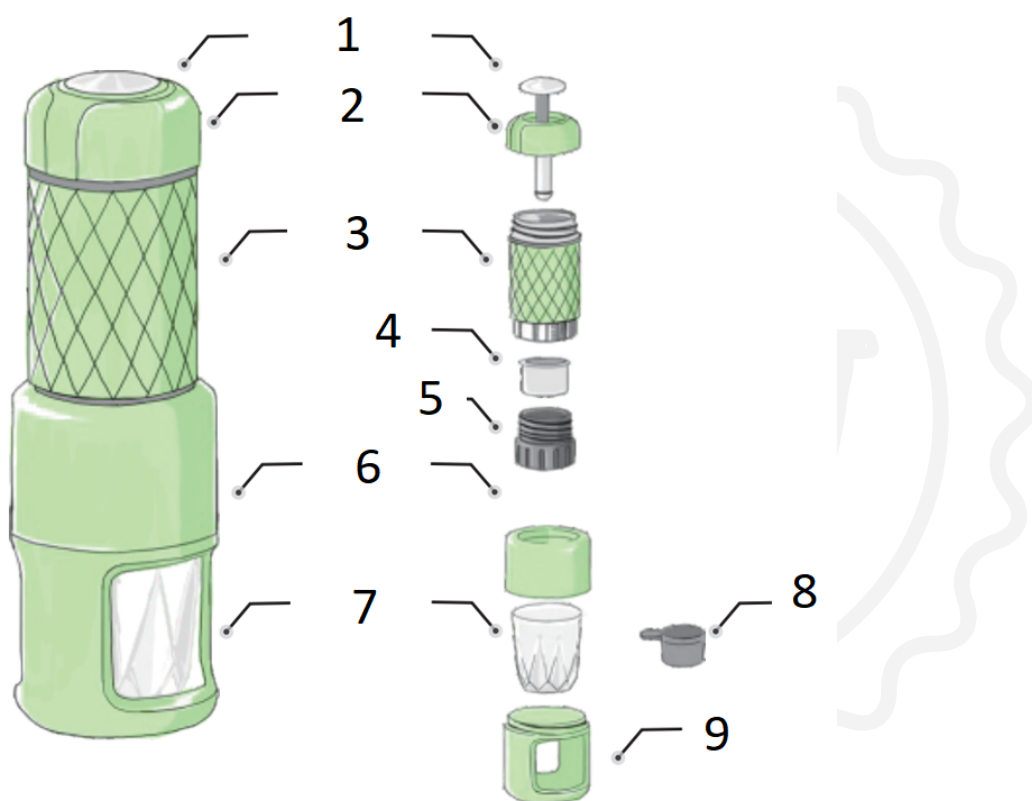
Instructions for use

Warning

Read this manual carefully before using Staresso for the first time. This will prevent the risk of injury to health and damage to the device.

- Do not use Staresso for any purpose other than that for which it was intended.
- After unpacking, make sure that Staresso is intact.
- Keep packaging material (plastic bag, etc.) out of the reach of children, as they may be a potential source of danger for them.
- Do not let children use or play with Staresso.

Product description



1. Piston
2. Pump lid
3. Water chamber
4. Filter basket
5. Bottom cap
6. Body
7. Espresso cup
8. Measuring cup
9. Cup stand

Use

Staresso is intended for personal use. Using Staresso for any purpose or in any manner other than as specified in this document may cause injury and void the product warranty. Staresso Culture Co., Ltd and NajTrade s.r.o. assume no liability for any injury or damage caused by incorrect use of Staresso.

Safety

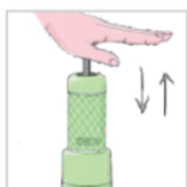
Staresso meets all safety standards for use in contact with food.

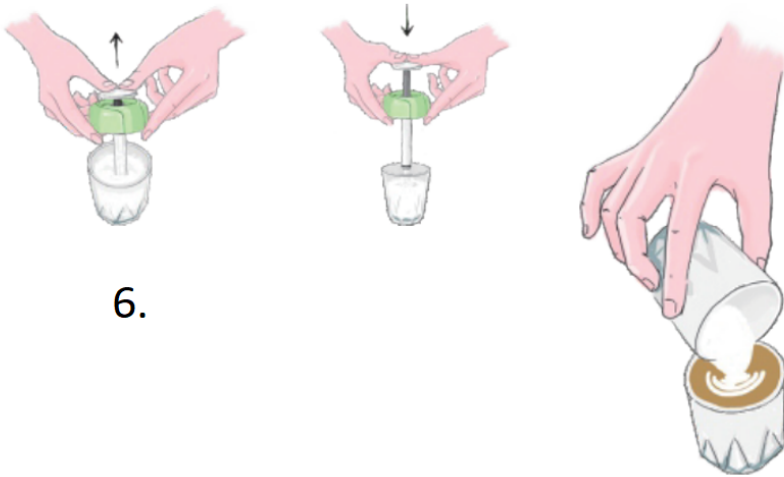
Environmental protection

All packaging parts and the body of the Staresso are made of recyclable materials.

User manual

1. Fill the coffee basket with ground coffee (7-10g) and press gently with the bottom of the measuring cup.
2. Put the basket back and screw it tightly into the water tank.
3. Open the pump lid and fill the water tank with hot water (50-80ml, 85+°C).
4. Press with even pressure until the tank is empty.
5. Remove the body of the coffee machine and remove the cup with your espresso.
6. Preparing frothed milk





6.

Advanced functions

Iced espresso

Use the same procedure with cold water. The resulting drink is easy to prepare but has a smoother taste and richer foam.

Iced cappuccino

Add frothed milk prepared with Staresso to your cold presso.

Americano

Use 7g of medium roast coffee and brew your presso 2x! (After preparing a classic espresso, return the drink to the water tank again. No additional dose of ground coffee is needed).

Black tee latte

Use 7g of black tea leaves instead of coffee, 60-80ml of boiling water and mix the resulting drink with frothed milk.

Cleaning

Respect your Staresso and clean it regularly after each use. If you take good care of it, it will last you for many years. Do not put any of the parts of the Staresso in the dishwasher!

1. Unscrew the pump cap and pump out the remaining water
2. Clean the coffee basket under running water
3. If you used the coffee maker to prepare frothed milk, immerse the pump in water and pump out the remaining milk



Disposal

Staresso is made from high quality materials that can be reused or recycled. After use, please dispose of Staresso at the appropriate waste collection point.

Warranty and how to use the product

Products are covered by the standard statutory warranty period. This warranty is non-transferable and financial compensation in cash is not possible. The warranty does not apply to products that have been used in a manner other than that specified in these instructions for use.

The warranty also does not cover:

- Damage resulting from improper use, neglect of care, or any other use for purposes not listed in this manual.
- Damage to appearance, damage caused by corrosion or gradual wear and tear.

Any intervention or repair by unauthorized persons results in the voiding of the product warranty.

Seller and importer: NajTrade s.r.o., Húskova 31, 04023 Košice, IČO: 50590502.