

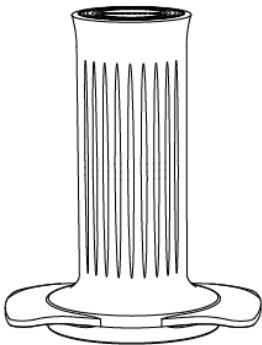


Cafflano Kompresso

Instructions for use

Congratulations! Now you can enjoy the freshest, most delicious coffee anywhere, exactly to your taste, with your Cafflano® Kompresso.

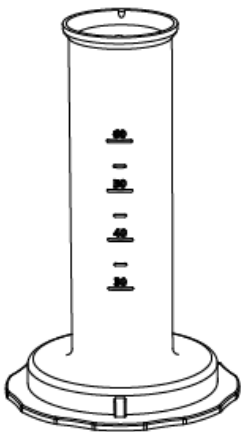
Product Design and Characteristics



PISTON

(Material: Polypropylene, Silicon)

Piston is assembled with Chamber and used for generating pressure by pushing lower handles.



CHAMBER

(Material: Polyethersulfone PES)

The graduated cylinder Chamber is made of eco-friendly material and used to hold hot water.

A scale is engraved to measure the accurate volume of water (30ml-60ml)



SHOWER SCREEN

(Material: Stainless Steel, Silicon)

Shower Screen helps disperse hot water stream evenly and

works as a gasket when assembled between the Chamber and Filter Basket.



FILTER BASKET

(Material: Polypropylene, Stainless Steel)

Filter Basket holds ground beans.

Hot water is pushed through the Shower Screen, ground beans and extracted through the stainless filter of Filter Basket.



TAMPING SCOOP

(Material: Polypropylene)

The Tamping Scoop is the container to scoop ground beans and pour them into Filter Basket. Its bottom face is used to tamp ground beans.



CUP

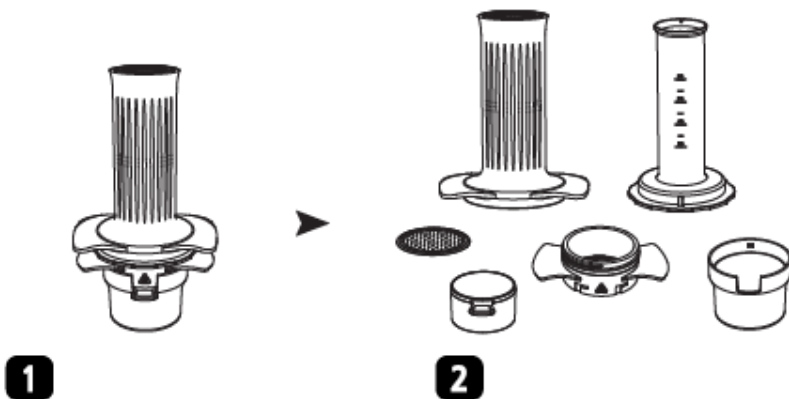
(Material: Bioplastic PETG)

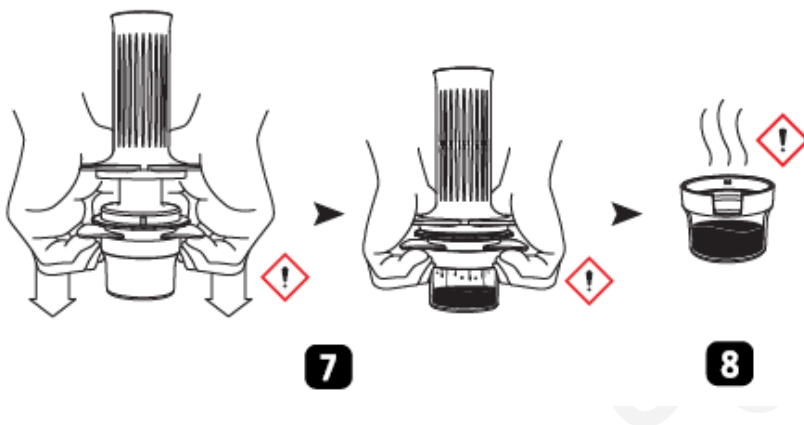
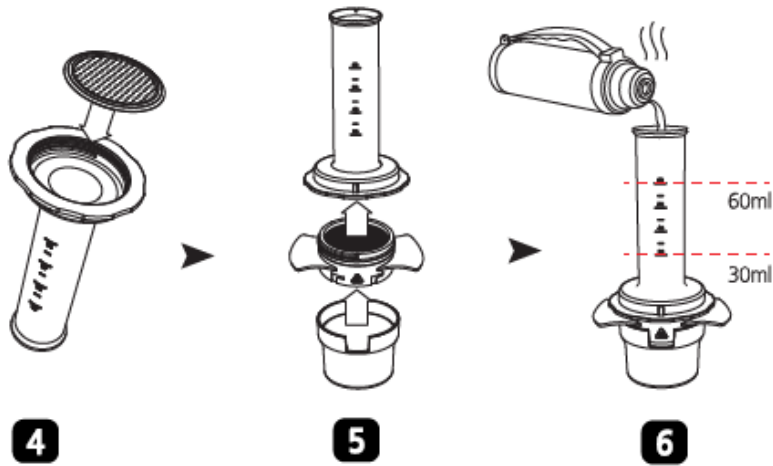
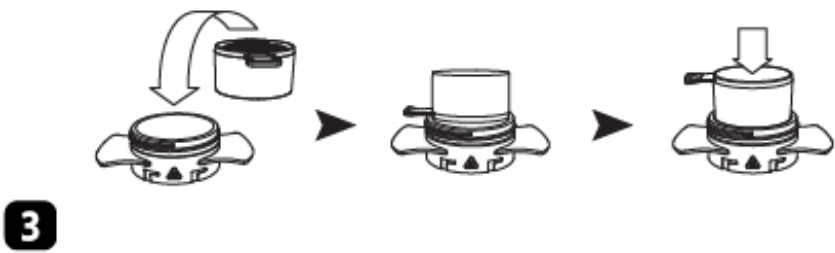
Cup holds the extracted espresso. Other containers may be used.

Enjoy the tastiest espresso with Cafflano Kompresso

Please visit our homepage www.cafflano.com for more product information and demo clips.

How to use





1. Complete product (When all parts are assembled)
2. Disassembled product
3. Scoop up your ground beans with the Tamping Scoop (10g - 15g) Put ground beans into Filter Basket and tamp them with the bottom face of Tamping Scoop
4. Assemble Shower Screen with Chamber
5. Screw Filter Basket fully into Chamber to prevent leakage. Assemble Cup with Filter Basket.
6. Pour desired amount of hot water into Chamber while referring to the engraved scales.
7. Put Piston into Chamber, wait for 5-10 seconds for pre-infusion, then use both hands to press and squeeze the handles of Piston and Filter Basket simultaneously. (9 bar of pressure is achieved when squeezing power reaches 55kgf) Be cautious as hot steam may come out from air-vent while extracting espresso.
8. Dismantle Cup and enjoy fresh Espresso!

Caution!

- Clean the product before using. (For the best results, use a soft sponge and neutral detergent)
- Do not expose to direct heat or flames to prevent deformation and discoloration.
- Do not heat, boil or use it for cooking.
- Keep the product out the reach of Children, and take caution when using it near infants.
- Do not use the product for anything other than its original purpose. (Do not use foreign substances other than ground beans)
- Tilting the product to one side may cause leakage.
- Always be cautious when consuming hot water/drinks. Hot liquids can scald user.
- Keeping substances for a long periods may result in discoloration of the product.

Cleaning and Maintaining

- Remove coffee grounds from Filter Basket and clean with running water or paper towel. Coffee grounds can be used as culture soil and fertilizer.
- The product can be disassembled and cleaned. Use soft cloth or sponge with neutral detergent.
- Do not clean with steel wool or apply bleach or cleaners containing chlorine on any part of the product.
- Allow stainless parts to dry completely to prevent water spots or patches of rust.
- Cleaning and drying straight after use can prevent odor and discoloration, allowing the product to last longer.
- Do not place the product in dishwasher, dish drier, or any type of oven or microwave. In case of rustm water spots, odor or discoloration, put the product into watered-down vinegar for some time, remove and clean with a soft cloth or sponge. Baking soda or exclusive detergent can also be used for stainless products.
- Drink. Wash. Drink. Wash. Drink. Wash. Then, you can use it like a brand new one for a long time.

Warranty and how to use the product

Products are covered by the standard statutory warranty period. This warranty is non-transferable and financial compensation in cash is not possible. The warranty does not apply to products that have been used in a manner other than that specified in these instructions for use.

The warranty also does not cover:

- Damage resulting from improper use, neglect of care, or any other use for purposes not listed in this manual.
- Damage to appearance, damage caused by corrosion or gradual wear and tear.

Any intervention or repair by unauthorized persons results in the voiding of the product warranty.

Seller and importer: NajTrade s.r.o., Húskova 31, 04023 Košice, IČO: 50590502.