

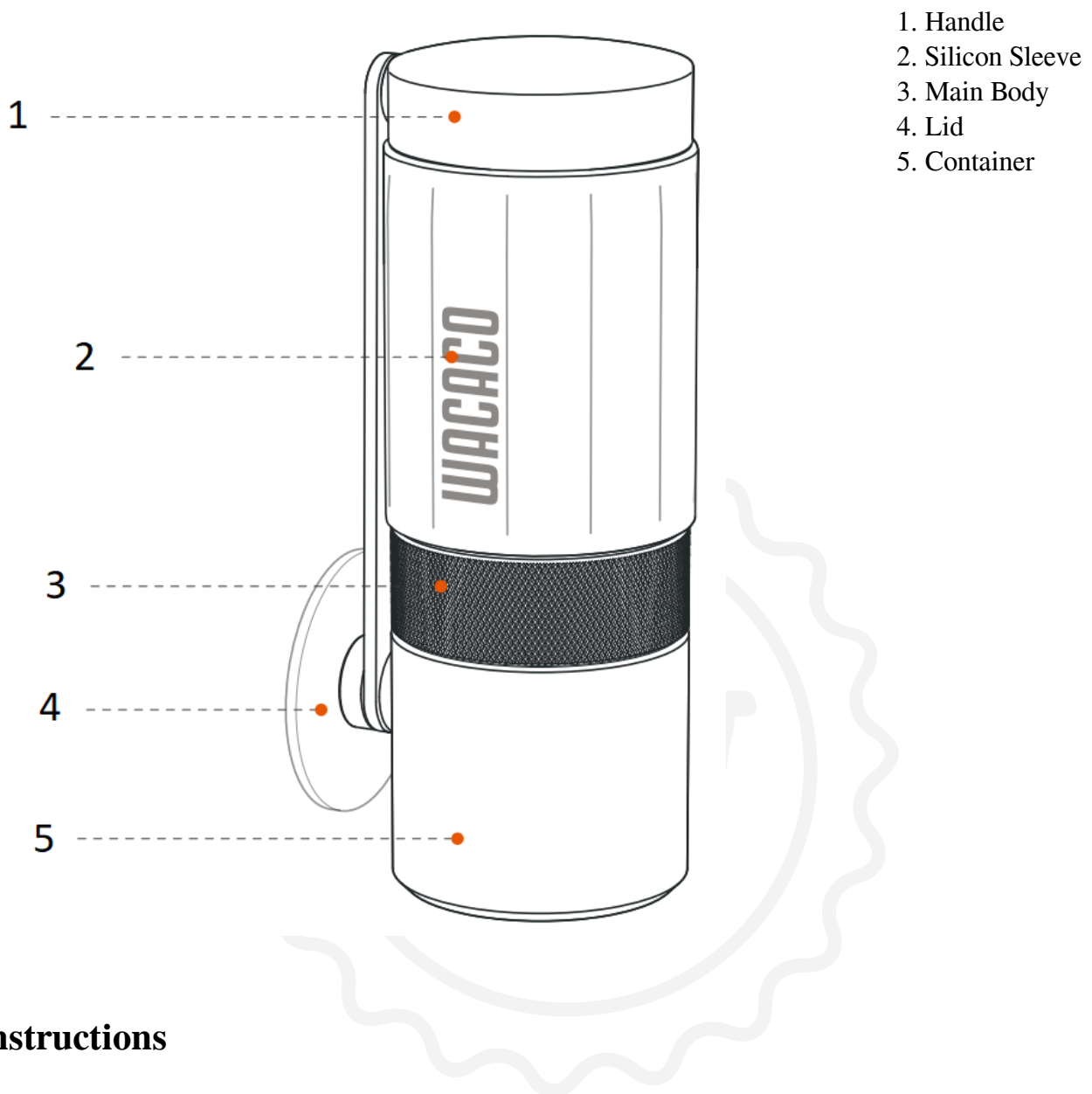


WACACO

Wacaco Exagrind

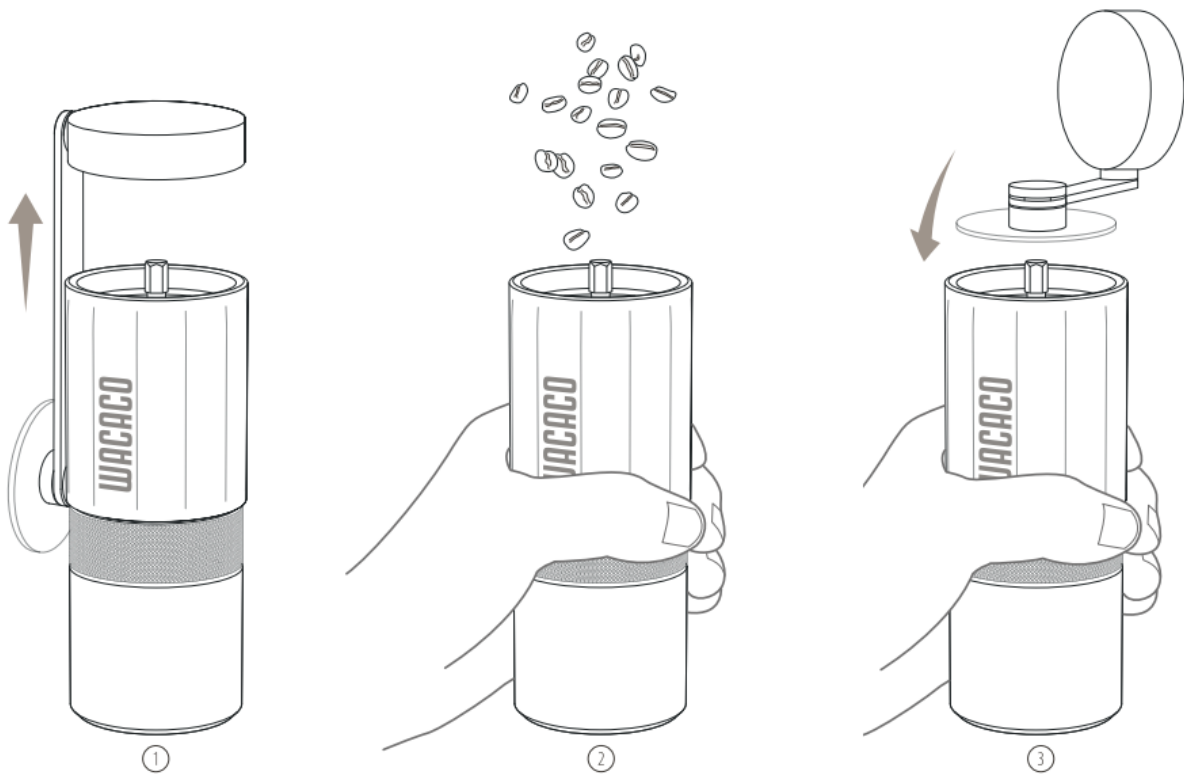
Instructions for use

Description



Instructions

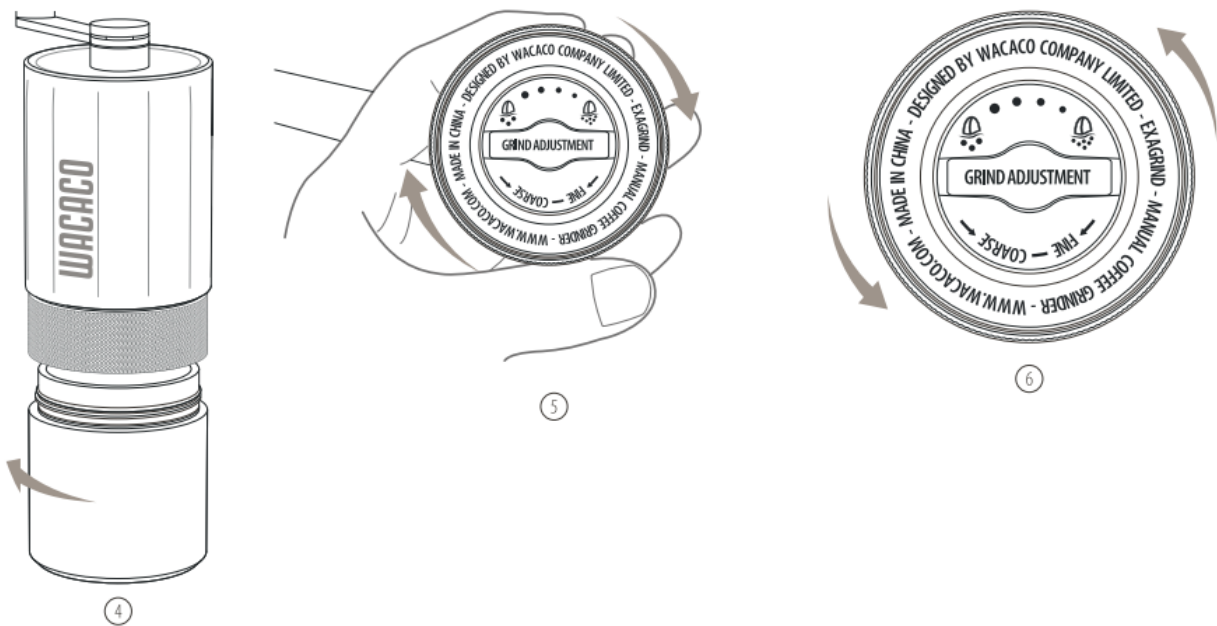
1. Remove the handle from its carrying position.
2. Load the grinder chamber with a maximum of 20g of coffee beans.
3. Fasten the handle lid side on the grinder.



4. Unscrew the container.

5. Hold the handle to avoid it from turning while rotating the adjustment knob clockwise until the tightest position (the starting point).

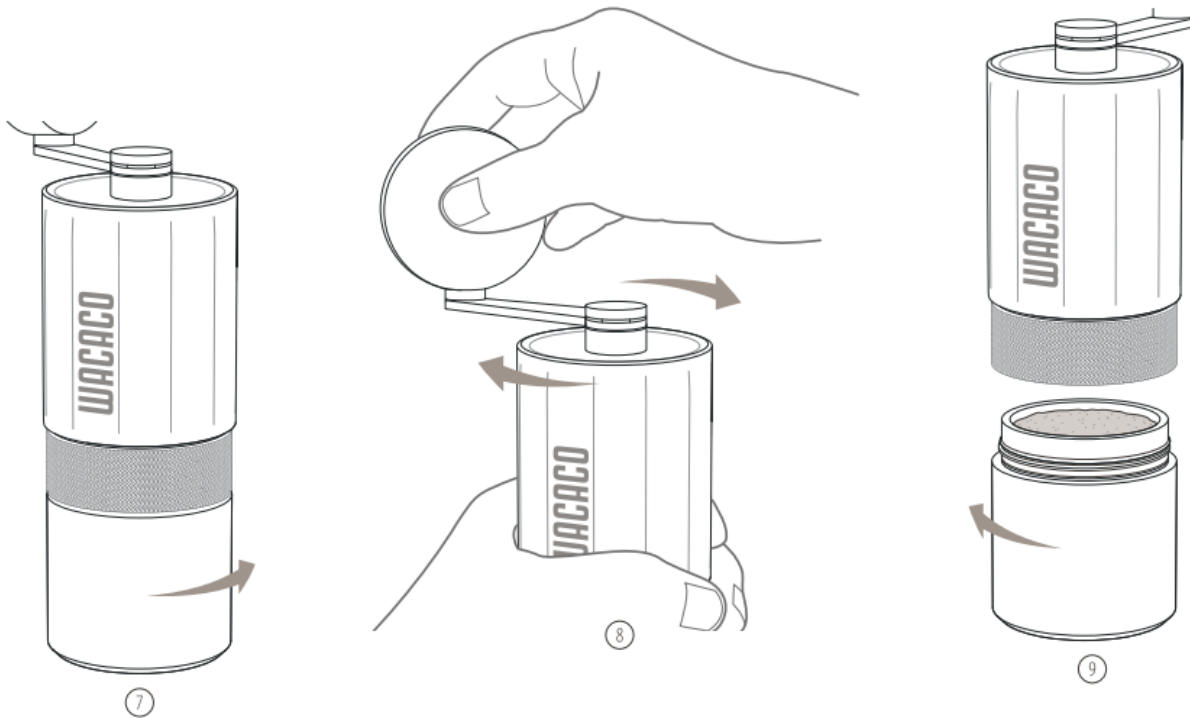
6. From the starting point, simply rotate the adjustment knob counterclockwise to your preferred grind setting. Refer to the brewing methods chart for a suggestion of the ideal grind setting.



7. Screw back the container.

8. Hold the main body in one hand and rotate the handle clockwise with your other hand until all the beans are ground.

9. When finished, unscrew the container and pour out the grind.



Note

- Each complete turn of the adjustment knob increases the burrs gap by 1mm.
- There are 30 clicks in a turn. Therefore, each click adjusts the burrs gap by 33 microns (0.033mm).
- Rotate the adjustment knob clockwise for finer grinding and counterclockwise for coarser grinding.

WARNING!

- The burrs may be disassembled with an excessive counterclockwise rotation.
- Add the lid in place before adjusting the grind coarseness.
- Keep the grinder in a dry location.
- Ensure the grinder is never washed or cleaned with water.

CAUTION!

- Do not try grinding coffee beans at the finest 0-6 clicks to ensure the longevity of the burrs sharpness.
- This device is for coffee beans use only. Do not grind other material.
- Be careful of the sharp metal burrs. This is not a toy. Keep the grinder out of reach of children.

Brewing Methods Chart

- ESPRESSO 10-20 clicks from the starting point.
- FILTER COFFEE 20-26 clicks from the starting point.
- POUR OVER 34-42 clicks from the starting point.
- FRENCH PRESS 42-46 clicks from the starting point.

Wacaco's Products



Picopresso - 13-15 clicks from the starting point.

Nanopresso - 16-18 clicks from the starting point.

Barista kit - 22-24 clicks from the starting point.

Minipresso - 18-20 clicks from the starting point.

Cuppamoka - 36-38 clicks from the starting point.

Pipamoka - 36-38 clicks from the starting point.

Intended Use

The Exagrind is intended to a personal use. It's not suitable for commercial, professional, collective or industrial use. Use of the Exagrind in any manner other than as directed herein could void the warranty. Wacaco Company Limited will not be responsible for injury or damage resulting from improper use of the Exagrind.

Warranty and how to use the product

Products are covered by the standard statutory warranty period. This warranty is non-transferable and financial compensation in cash is not possible. The warranty does not apply to products that have been used in a manner other than that specified in these instructions for use.

The warranty also does not cover:

- Damage resulting from improper use, neglect of care, or any other use for purposes not listed in this manual.
- Damage to appearance, damage caused by corrosion or gradual wear and tear.

Any intervention or repair by unauthorized persons results in the voiding of the product warranty.

Seller and importer: NajTrade s.r.o., Húskova 31, 04023 Košice, IČO: 50590502.

